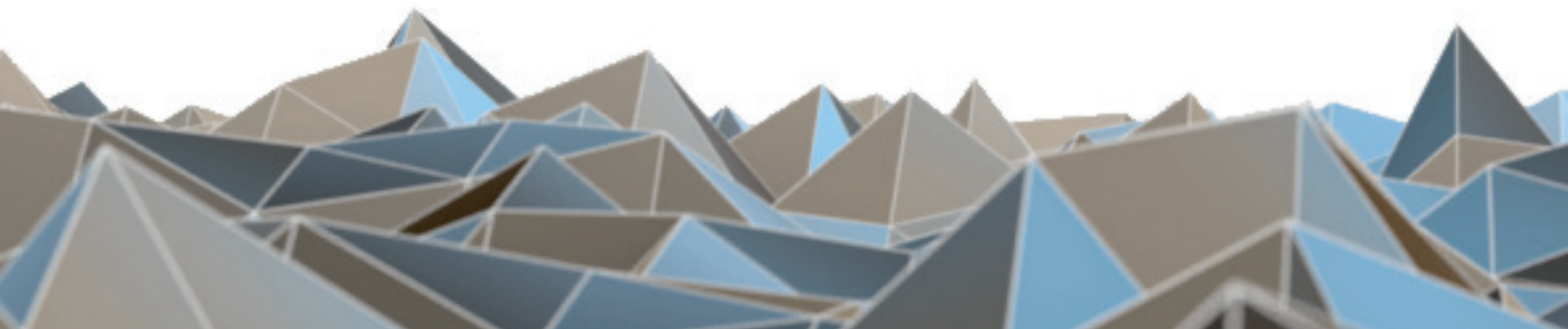


BLUETECHNIX
Embedding Ideas

Argos3D - P100

Quick Start Guide

Version 1.5



Bluetechnix GmbH

Waidhausenstraße 3/19
A-1140 Vienna
AUSTRIA

office@bluetechnix.com
www.bluetechnix.com

Argos^{3D} - P100 - Quick Start Guide

Document No.: 900-308 / A

Publication date: September 18, 2013

Applicable to: SDK release \geq 2.2

Subject to change without notice. Errors excepted.

This document is protected by copyright. All rights reserved. No part of this document may be reproduced or transmitted for any purpose in any form or by any means, electronically or mechanically, without expressly written permission by Bluetechnix GmbH.

Windows is a registered trademark of Microsoft.

Table of Contents

1	Unboxing	4
1.1	In the box	4
1.2	Connecting your Argos ^{3D} -P100.....	4
1.2.1	Connector Overview	4
1.2.2	Connecting the power supply.....	5
1.2.3	Connecting USB2.0 cable	5
2	Evaluation Package.....	6
2.1	Support website.....	6
2.2	Login Screen	7
2.3	Register as new customer	7
3	Install Argos ^{3D} - P100 Drivers	10
4	Start using your Argos ^{3D} - P100 with “Visualizer”	17
4.1	Working with “Visualizer”.....	18
4.1.1	Connection (1).....	18
4.1.2	Applying source- and process-commands (2)	18
4.1.3	Changing the color range (3)	18
4.1.4	Statistics (4)	19
4.1.5	Status Information (5).....	19
4.1.6	Changing the integration time (6)	19
4.1.7	Changing the frame rate (7)	19
4.1.8	Generic register read/write (8)	19
5	System Requirements & Support.....	20
5.1	Visualizer	20
5.2	LightVis.....	20
5.3	Support	20
6	Index.....	21

© Bluetechnix GmbH 2013

All Rights Reserved.

The information herein is given to describe certain components and shall not be considered as a guarantee of characteristics.

Terms of delivery and rights of technical change reserved.

We hereby disclaim any warranties, including but not limited to warranties of non-infringement, regarding circuits, descriptions and charts stated herein.

Bluetechnix makes and you receive no warranties or conditions, express, implied, statutory or in any communication with you. Bluetechnix specifically disclaims any implied warranty of merchantability or fitness for a particular purpose.

Bluetechnix takes no liability for any damages and errors causing of the usage of this board. The user of this board is responsible by himself for the functionality of his application. He is allowed to use the board only if he has the qualification. More information is found in the General Terms and Conditions (AGB).

Information

For further information on technology, delivery terms and conditions and prices please contact Bluetechnix (<http://www.bluetechnix.com>).

Warning

Due to technical requirements components may contain dangerous substances.

1 Unboxing

1.1 In the box

- Argos^{3D} - P100
- Micro USB Cable
- 5V_{DC}/3A Power Supply
- Tripod
- Quick Start Guide
- Argos^{3D} - P100 Support CD including SDK, Visualizer, manuals etc.
- Argos^{3D} - P100 ADAF Basic CD

1.2 Connecting your Argos^{3D}-P100

1.2.1 Connector Overview

The Argos^{3D} - P100 features three connectors. A 5V_{DC}@2,5A connection, Micro USB2.0 and an external sync interface.

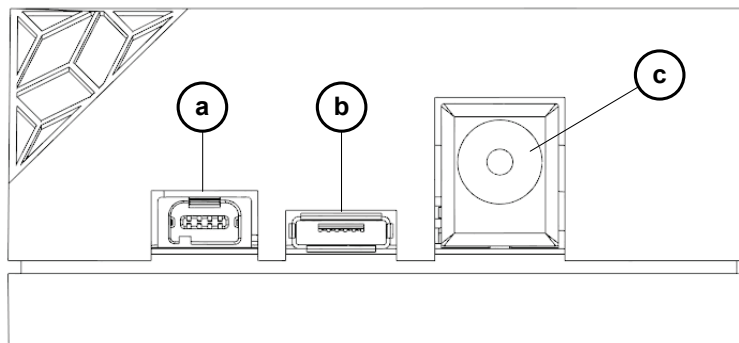


Figure 1-1: Connector Overview

- a. Modulation Light Interface
- b. Micro USB 2.0 Interface
- c. Power Connector

NOTE: Please follow the next steps in the right order to get your 'P100' up and running correctly.

1.2.2 Connecting the power supply

To ensure, that your Argos^{3D} - P100 works correctly, plug in the power supply and wait for approximately 10 seconds until the camera boots up.

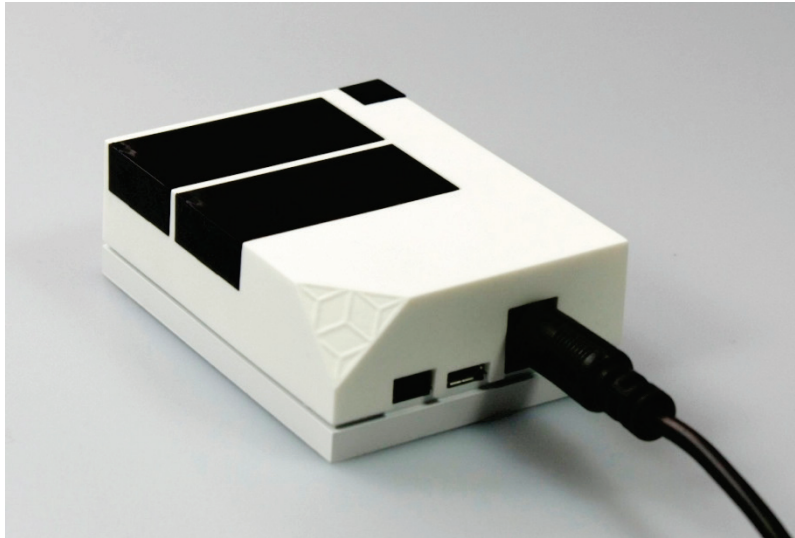


Figure 1-2: Connecting Power Supply

1.2.3 Connecting USB2.0 cable

After boot up, plug in the micro USB2.0 cable and connect your Argos^{3D} - P100 to a free USB port of your PC.

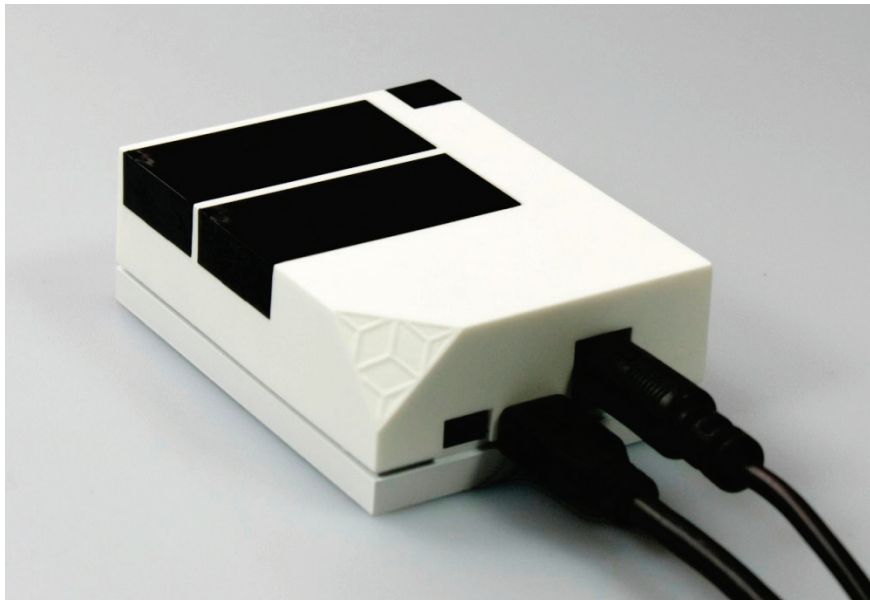


Figure 1-3: Connecting USB2.0 cable

2 Evaluation Package

The Argos^{3D} - P100 Evaluation Package containing of the SDK, Visualizer, documentation etc. can be found on the enclosed **Support CD**. For updates register on our support website at <https://support.bluetechnix.com/> and download the latest version of the Evaluation Package for your Argos^{3D} – P100.

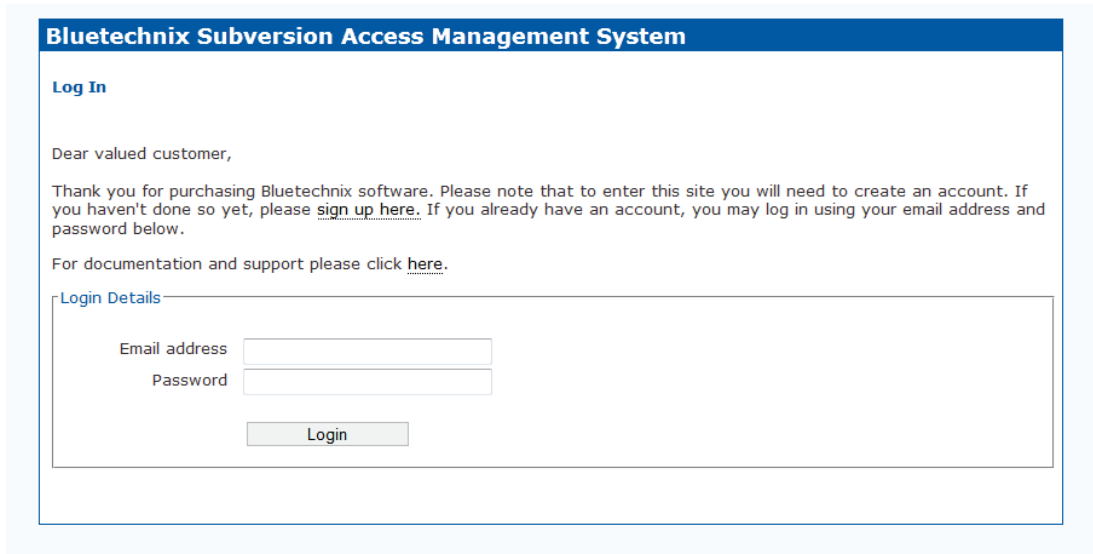
“ADAF Basic” is included on a separate CD.

2.1 Support website



Figure 2-1: Download Evaluation Package

2.2 Login Screen

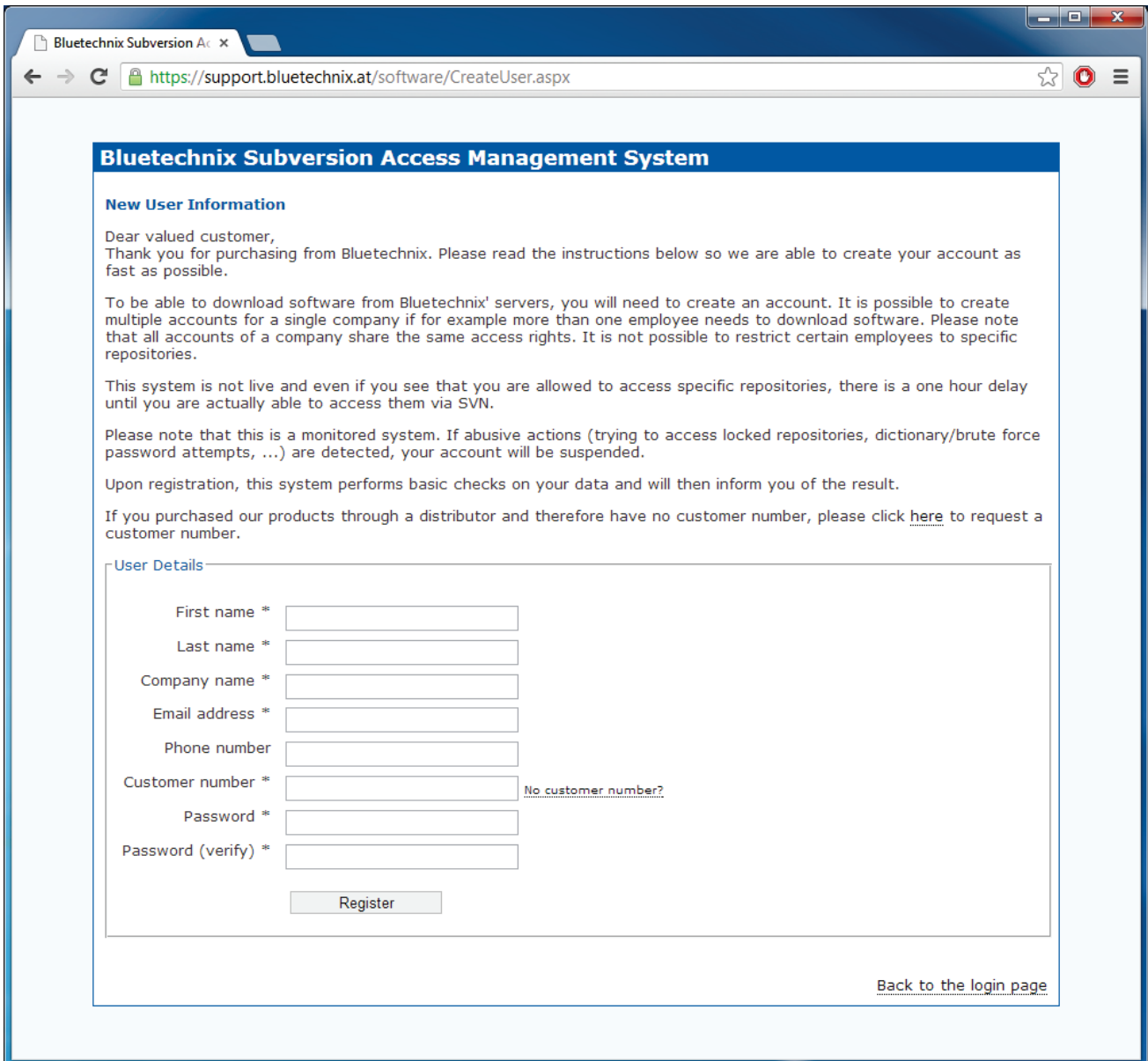


The screenshot shows a web browser window with the title "Bluetechnix Subversion Access Management System". The page has a blue header bar with the title. Below the header, the text "Log In" is displayed. The main content area contains a message: "Dear valued customer, Thank you for purchasing Bluetechnix software. Please note that to enter this site you will need to create an account. If you haven't done so yet, please [sign up here](#). If you already have an account, you may log in using your email address and password below. For documentation and support please click [here](#)." Below this message is a "Login Details" section with a form. The form has two input fields: "Email address" and "Password". Below the "Password" field is a "Login" button.

Figure 2: Login screen

2.3 Register as new customer

If you don't have a valid customer login you can create a new account at <https://support.bluetechnix.com/software/CreateUser.aspx>



The screenshot shows a web browser window with the address bar displaying <https://support.bluetechnix.at/software/CreateUser.aspx>. The page title is "Bluetechnix Subversion Access Management System".

New User Information

Dear valued customer,
Thank you for purchasing from Bluetechnix. Please read the instructions below so we are able to create your account as fast as possible.

To be able to download software from Bluetechnix' servers, you will need to create an account. It is possible to create multiple accounts for a single company if for example more than one employee needs to download software. Please note that all accounts of a company share the same access rights. It is not possible to restrict certain employees to specific repositories.

This system is not live and even if you see that you are allowed to access specific repositories, there is a one hour delay until you are actually able to access them via SVN.

Please note that this is a monitored system. If abusive actions (trying to access locked repositories, dictionary/brute force password attempts, ...) are detected, your account will be suspended.

Upon registration, this system performs basic checks on your data and will then inform you of the result.

If you purchased our products through a distributor and therefore have no customer number, please click [here](#) to request a customer number.

User Details

First name *	<input type="text"/>
Last name *	<input type="text"/>
Company name *	<input type="text"/>
Email address *	<input type="text"/>
Phone number	<input type="text"/>
Customer number *	<input type="text"/> No customer number?
Password *	<input type="password"/>
Password (verify) *	<input type="password"/>

[Back to the login page](#)

Figure 2-3: Registration form

Quick Start Guide - Argos3D - P100

Once you downloaded the evaluation package extract the .zip file on your hard drive to e.g.

C:\Argos3D-P100\ and read the Readme.txt first.

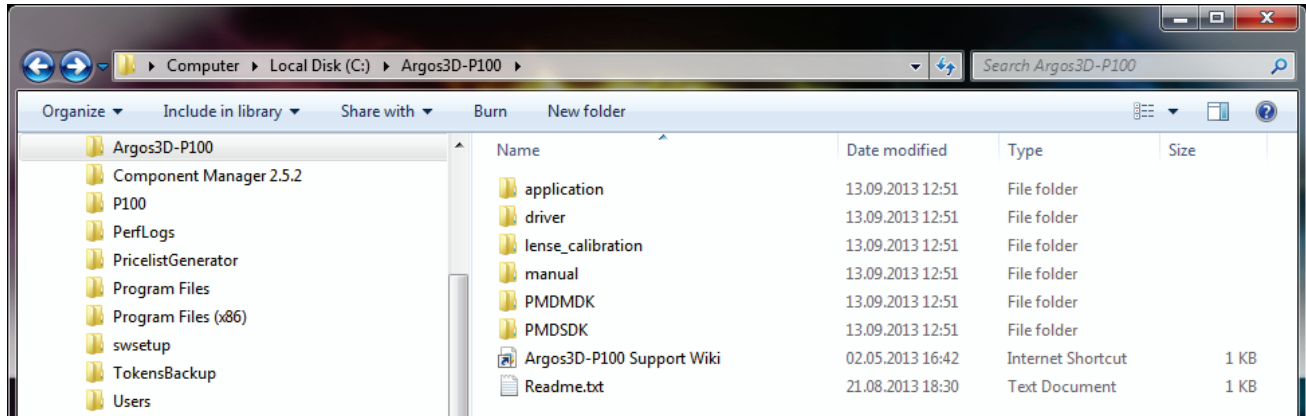


Figure 2-4: Unzipped Evaluation Package

3 Install Argos^{3D} - P100 Drivers

At the first time you have plugged in your Argos^{3D} - P100, you have to install the driver which can be found in the evaluation package.

Open the Windows Device Manager by pressing the *Windows-Button* + *Pause-Button* and choose *Device Manager* as shown in following figure.

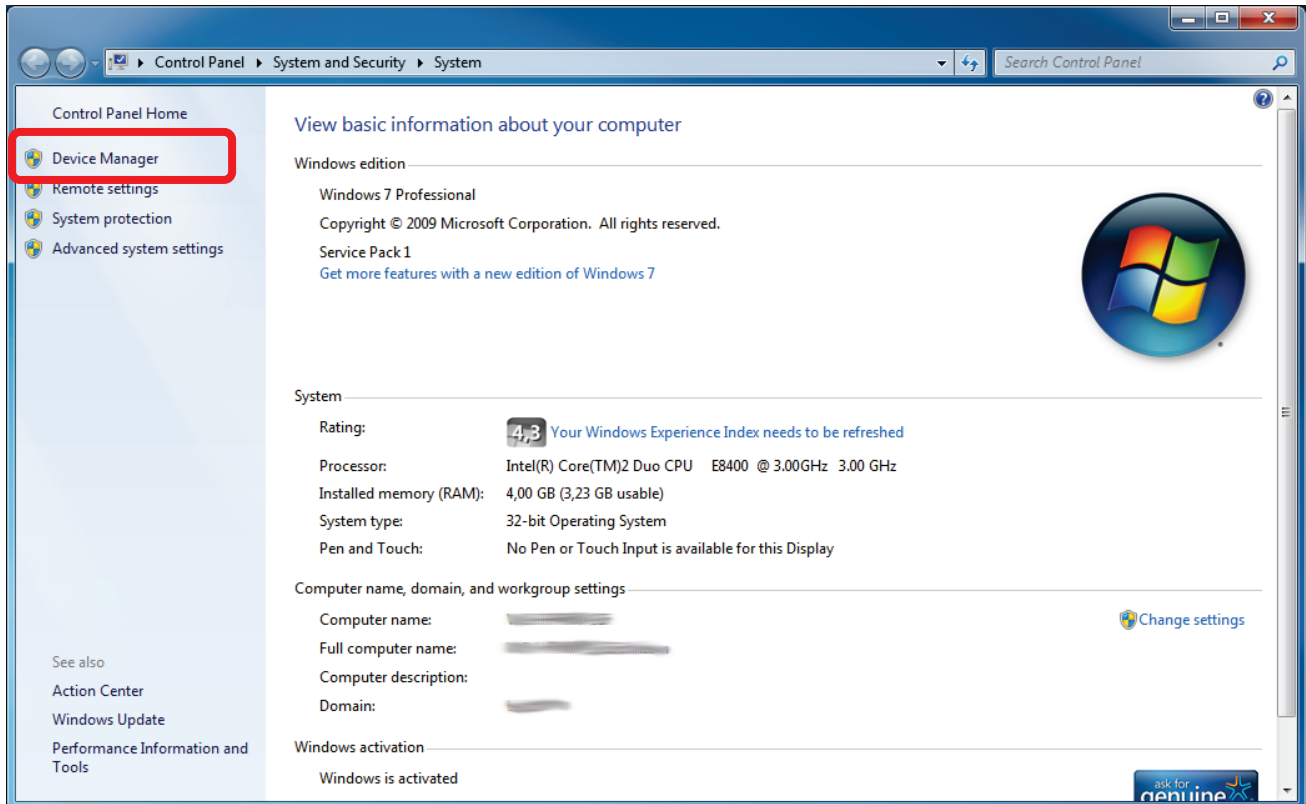


Figure 3-1: Windows Device Manager

Once Device Manager is opened, right click “*Bluetechnix – Argos3D – P100*” in “*Other Devices*” and click “*Update Driver Software*”.

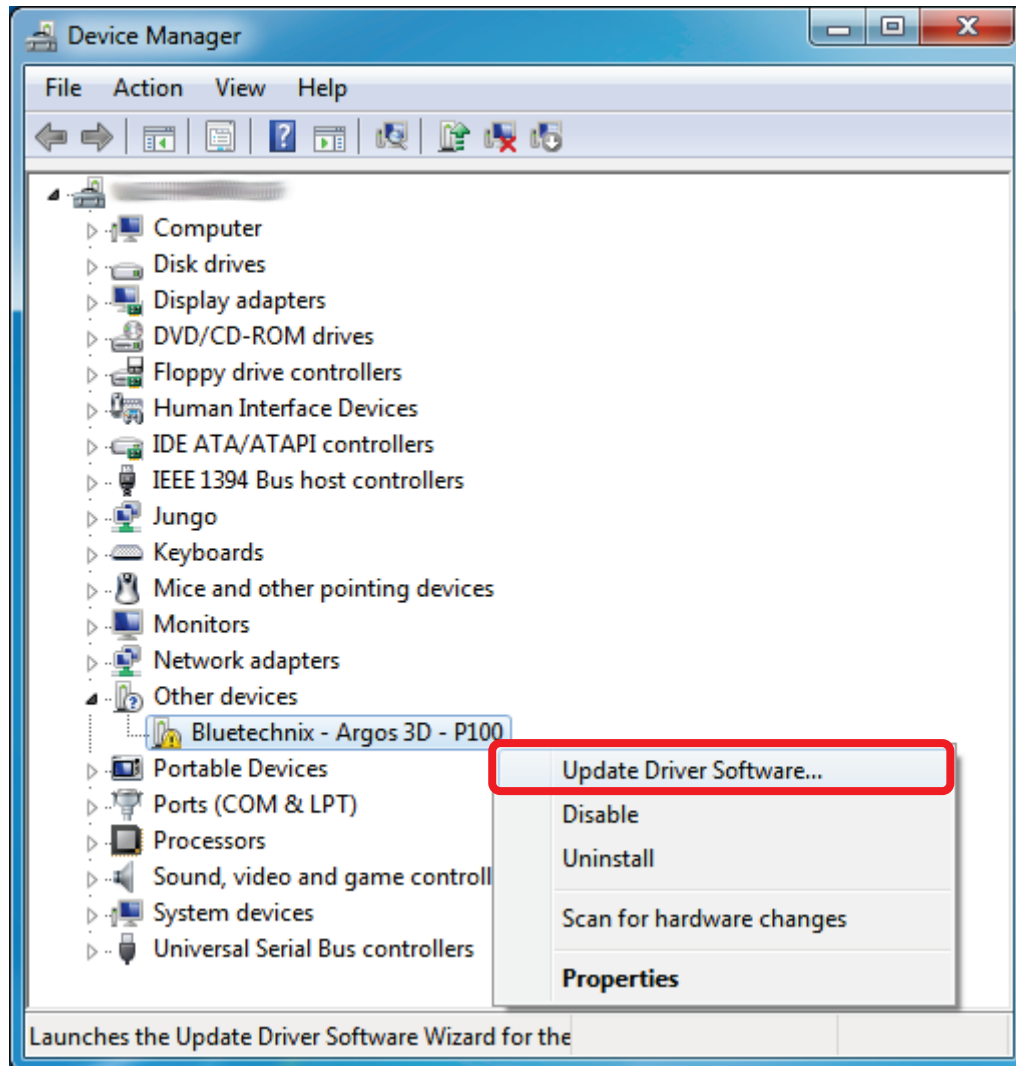


Figure 3-2: Device Manager – Update Driver Software

Then choose “*Browse my computer for driver software*”.

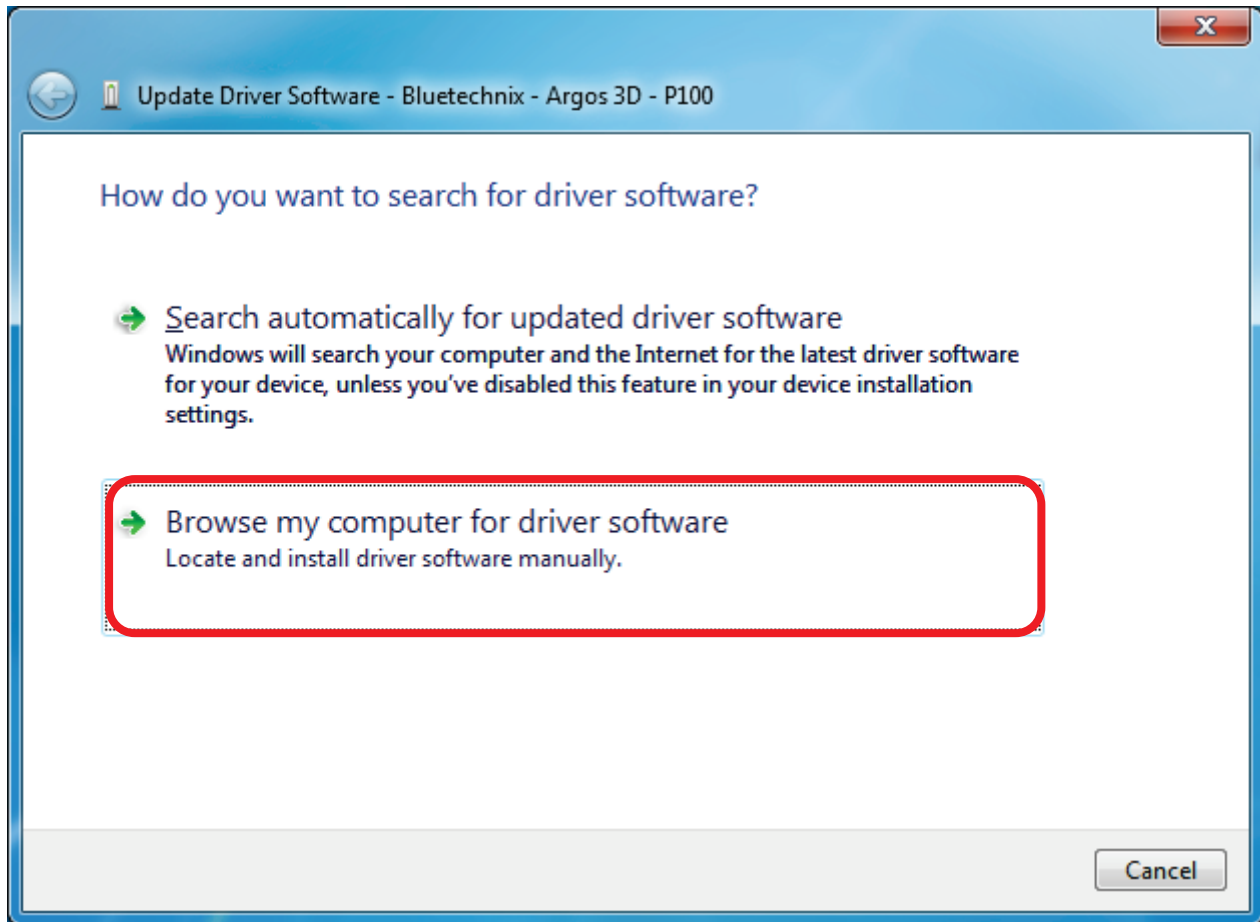


Figure 3-3: Locate and install driver software manually

Point the driver install utility to “C:\Argos3D-P100\windows\driver” on your local hard drive. Check “Include subfolders” and click “Next”.

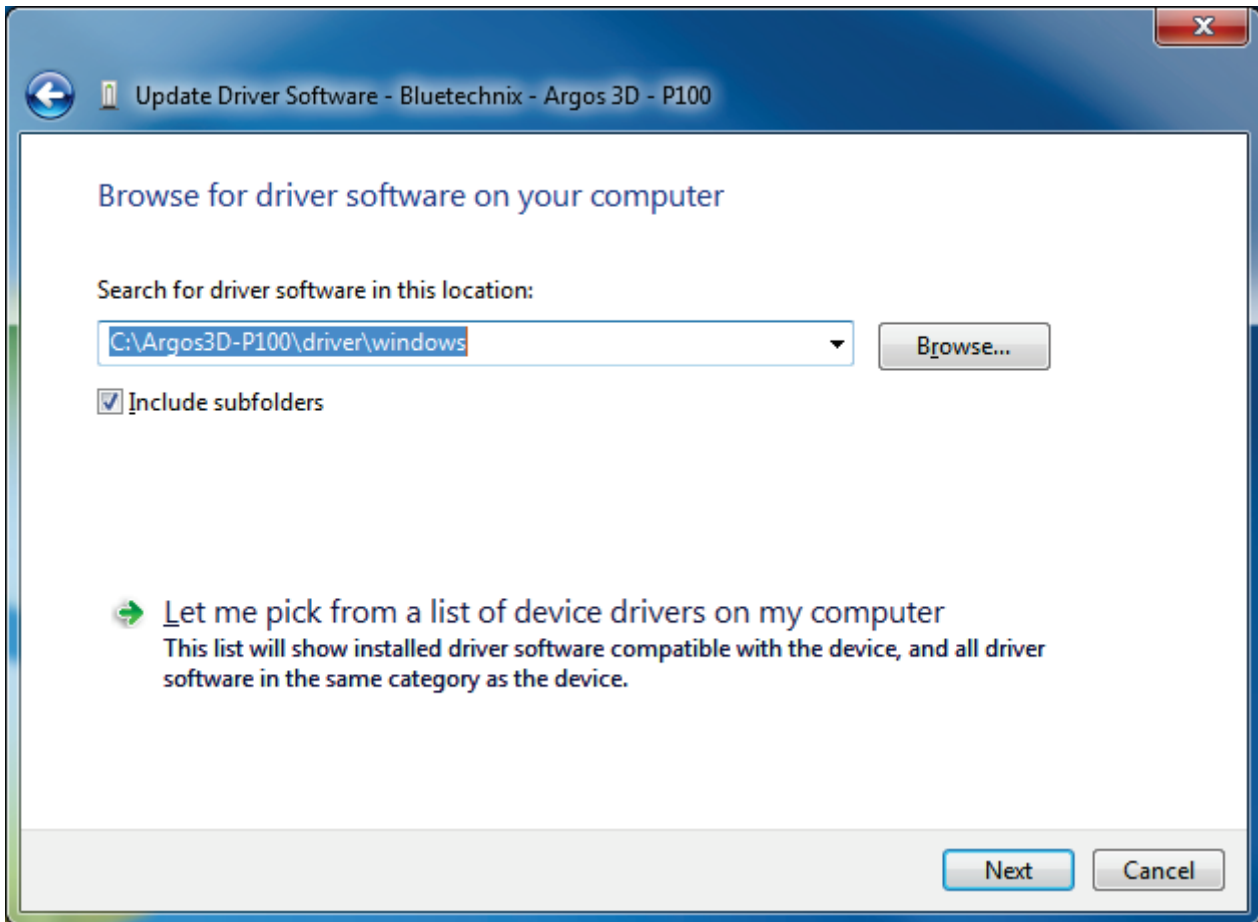


Figure 3-4: Browse for driver software on your computer

If the Windows Security warning appears choose “*Install this driver software anyway*”.

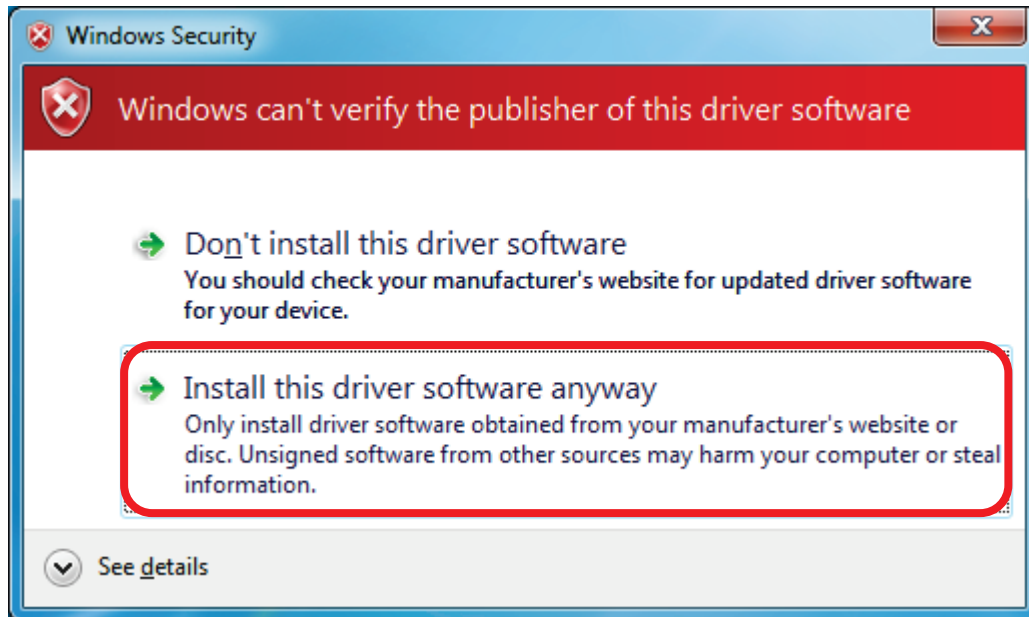


Figure 3-5: Driver security warning

The *Update Driver Software Utility* finishes the driver installation showing following Window.

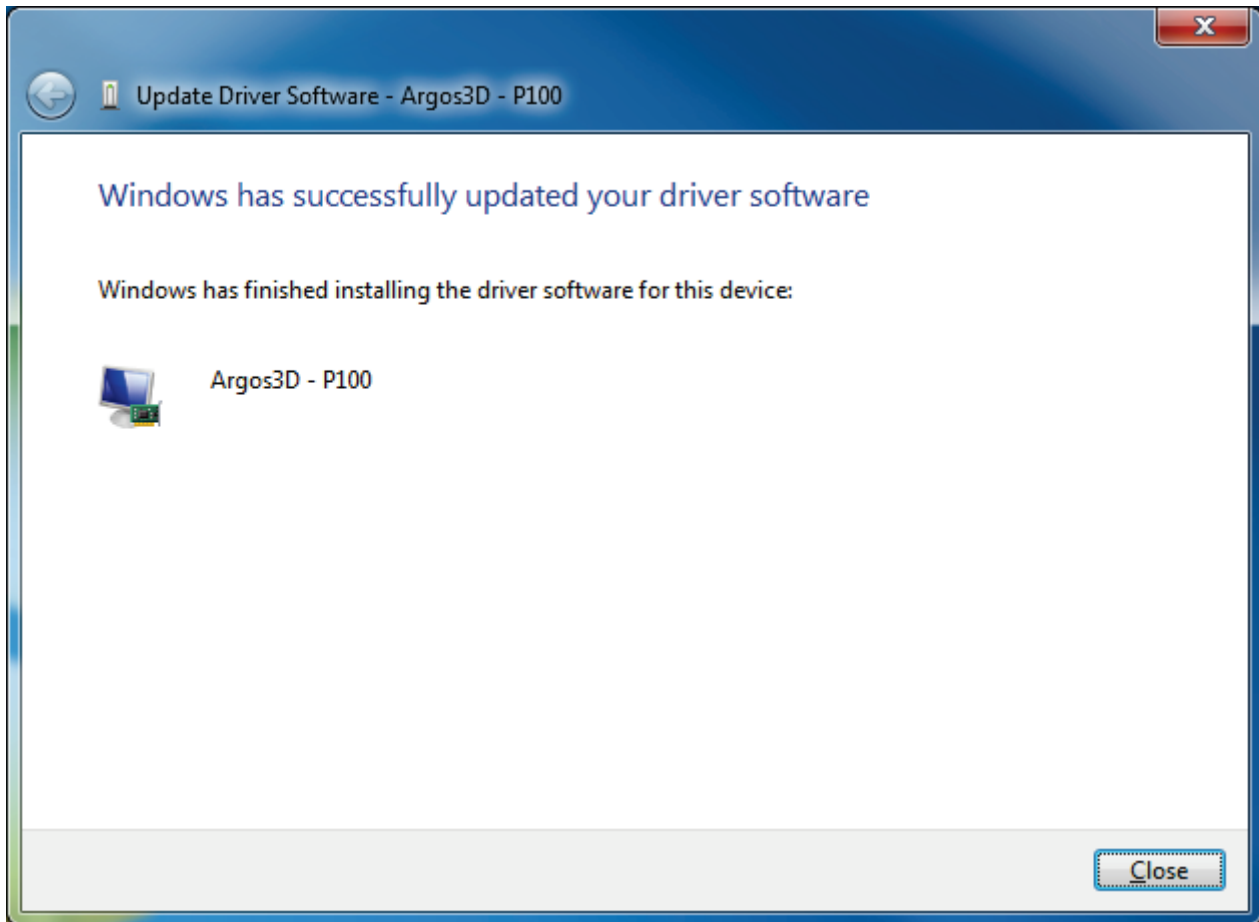


Figure 3-6: Driver Software successfully installed

After successful driver installation there should be a new device in device manager named “Argos 3D - P100”.

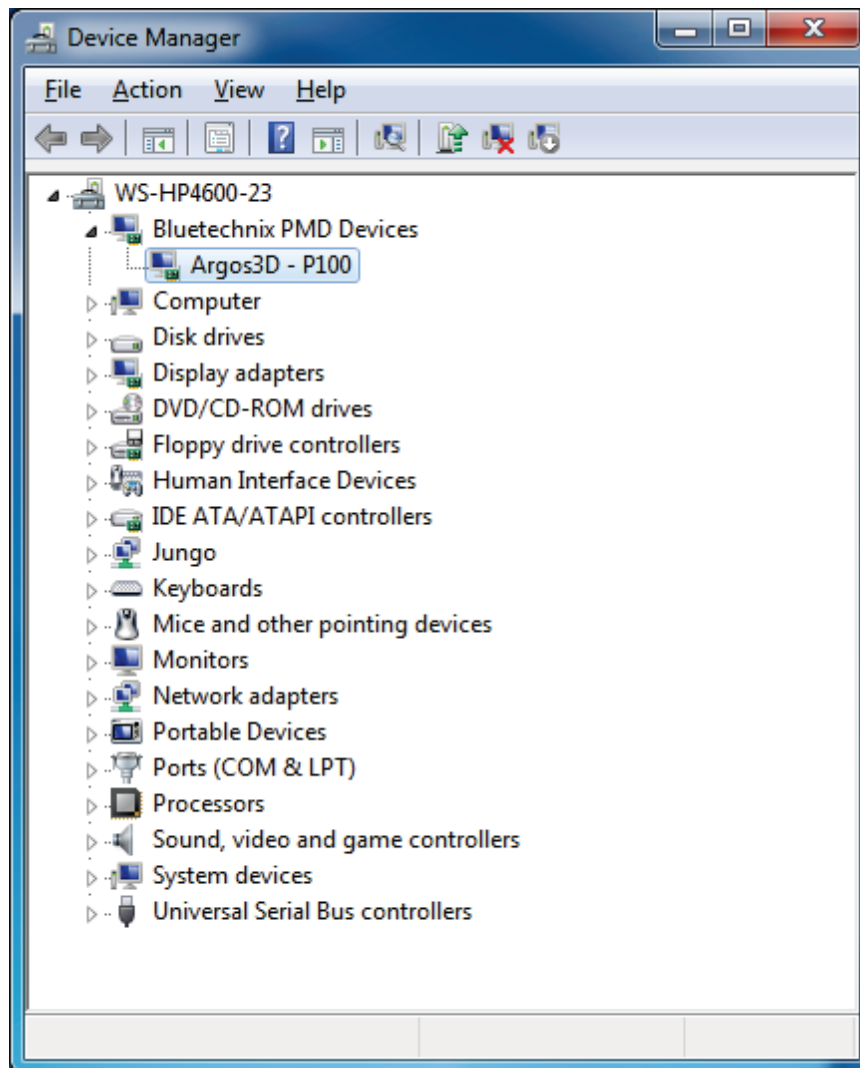


Figure 3-7: Bluetechnix PMD Devices in Device Manager

Congratulations



You now have successfully installed your Argos^{3D} - P100 on your PC.

4 Start using your Argos^{3D} - P100 with “Visualizer”

When you browse to

“C:\Argos3D-P100\application\Visualizer\bin\x64”
(64Bit Windows) or

“C:\Argos3D-P100\application\Visualizer\bin\x86”
(32Bit Windows)

you’ll find **Argos3D - P100 Visualizer.exe**. Using this software you can simply display the depth image and the amplitude image of the Argos^{3D} - P100. Mount the Argos^{3D} - P100 on the provided tripod and place it on your desk in front of you.



Figure 4-1: Sample scenario with Argos3D - P100

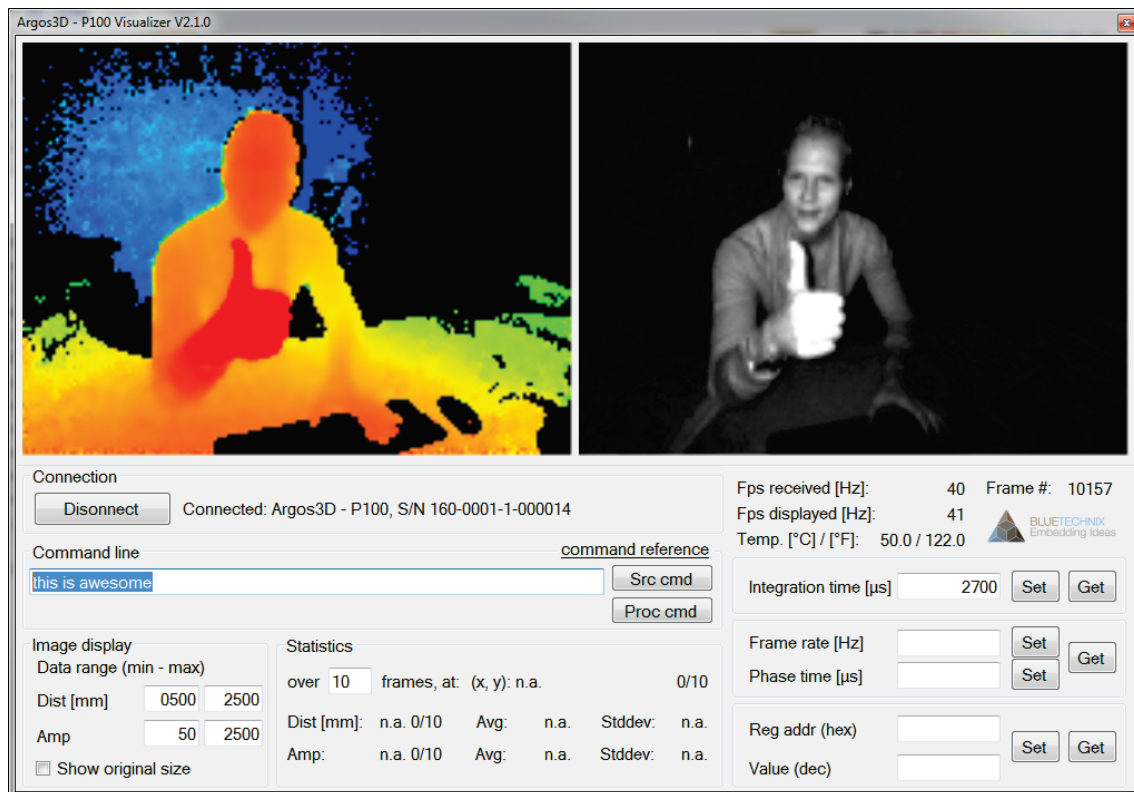


Figure 4-2: Visualizer GUI

Important



The default configuration of your Argos^{3D} - P100 is set to capture scenes in approximately **1.5m** with **40 frames per seconds**. For other configurations refer to the User Manual of Argos^{3D} - P100.

4.1 Working with “Visualizer”

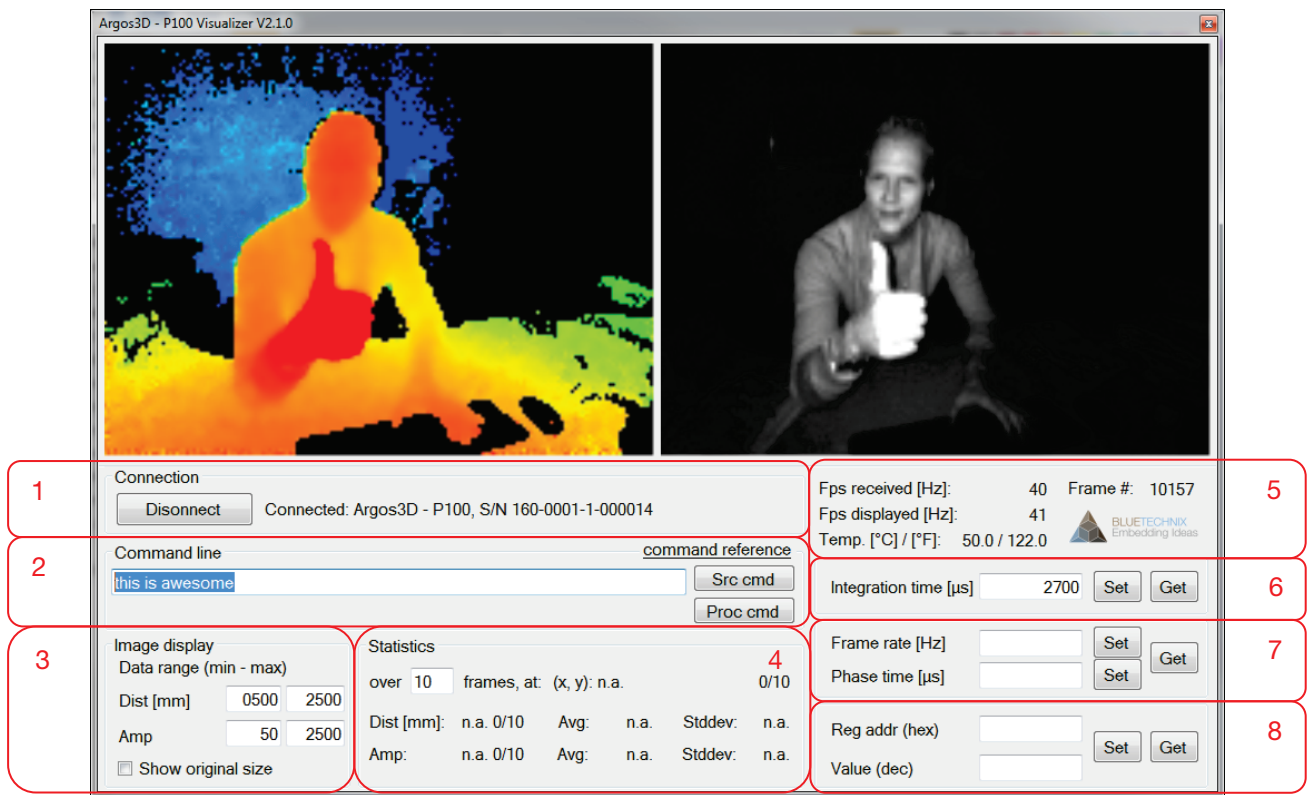


Figure 4-3: Visualizer screenshot with description

4.1.1 Connection (1)

Press the “Connect / Disconnect” button for connecting or disconnecting the sensor.

4.1.2 Applying source- and process-commands (2)

To apply source- or process-commands use the text-field from section 6 (see Figure 4-3). After the command has been entered press the “Src cmd” or the “Proc cmd” button for applying either a source- or a process-command.

For a list of source and process commands please click “command reference” and refer to our support site at <https://support.bluetech-nix.com/wiki/Argos>

4.1.3 Changing the color range (3)

To adjust the color range to a certain setup or scene use the min and max text-fields in the “Image display” section (3) (see Figure 4-3). Type in the minimum distance and amplitude expected and the maximum distance and amplitude expected. The color scheme will then be expanded from red to blue for the distance image and from black to white for the amplitude image, between the selected minimum and maximum.

4.1.4 Statistics (4)

The statistics section shows the average (**Avg**) of the amplitude and the distance over a certain number of frames. In addition the standard deviation (**Stddev**) is shown. To see the statistics of a certain pixel just move the mouse over the pixel of interest (either in the distance or the amplitude window) and wait until the selected number of frames have been received. If you move the mouse the buffer is cleared.

4.1.5 Status Information (5)

The status information shows the current number of received frames per second (**fps received**), the frames drawn per second (**fps drawn**) the current frame number and the temperature of the LED-Board (**Led**).

Be aware that the frames drawn may be significantly lower than the frames received. This because the application is not able to show the frames as fast as they are delivered by the camera. It depends on the PC configuration how many frames can be processed per second.

4.1.6 Changing the integration time (6)

To change the integration time, type the integration time in μs in the text-field and press the “set” button. To control the integration time currently set, press the “get” button.

The text-field becomes green if the operation was successful, red otherwise.

4.1.7 Changing the frame rate (7)

The frame-rate can be changed using section 7 (see Figure 4-3).

You can enter your required fps directly to the associated text field. As an alternative you can enter the required phase time.

Phase Time $[\mu\text{s}] = 1 / (4 \times \text{fps} [\text{Hz}])$

The text-field becomes green if the operation was successful, red otherwise.

4.1.8 Generic register read/write (8)

To write or read any register from the camera use section 8 (see Figure 4-3). Type in the register address as hexadecimal value and the content as decimal value, then press the “set” button.

To read a register enter the register address as hexadecimal value and press the “get” button. The register content should be shown as decimal value in the “Value” text-field.

The text-field becomes green if the operation was successful, red otherwise.

5 System Requirements & Support

An Argos^{3D} - P100 enabled application is required in order to use this Argos^{3D} - P100 device.

Connect to a system with:

- Operating System: Microsoft Windows XP/7
- 32 bit (x68) or 64 bit (x64) processor
- Dual-core 2 GHz or faster CPU
- Dedicated USB 2.0 port
- 2 GByte RAM

5.1 Visualizer

Visualizer is available on following operating systems:

- Microsoft Windows XP/7 with .NET 3.5 or higher

5.2 LightVis

Lightvis can be used as first step example for the evaluation on Linux OS. Currently only the Ubuntu 12.04 distribution is supported. You can find LightVis in the directory “C:\Argos3D-P100\application\LightVis” of the support package.

5.3 Support

For answers to common questions, troubleshooting steps and further documentation visit our Bluetechnix support website or using the direct link: <https://support.bluetechnix.com/wiki/Argos>

6 Index

A

Amplitude image 17

C

Connecting
 Argos3D-P100..... 4
 Contents
 Package 4

D

Depth image..... 17
 Drivers
 Installation 10

E

Evaluation Package
 Downloading 6

L

LightVis 20

P

Power Supply
 Connecting..... 5

S

Start using your Argos
 Visualizer 17
 Support 20
 System Requirements & Support 20

T

Troubleshooting 20

U

USB2.0
 Connecting..... 5

V

Visualizer
 Work with 18