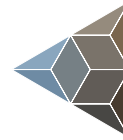


# TIM-UP-19k-S3

## Spartan 6

ToF Depth Sensor Module



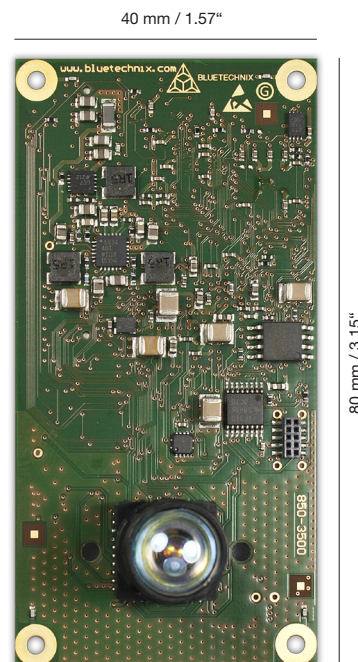
BLUETECHNIX  
Embedding Ideas

The modular ToF Kit is a building block system that was developed to satisfy a variety of demands and applications of depth sensors.

The TIM-UP-19k-S3 is based on PMD's 19k-S3 Time of Flight IC. It has a FoV of 90° and provides a 3D point cloud data at a 8 bit parallel interface and via USB 2.0. For this product there is a variety of lenses available.

Customer specific ToF solutions can be handled individually. The long standing experience of Bluetechnix in the business of modules facilitates that ToF based depth sensors can be divided into individual components that can be both flexible and compact, and also cost efficient.

The modular ToF Kit guarantees maximum flexibility and serves as a basis for customer based ToF solutions.

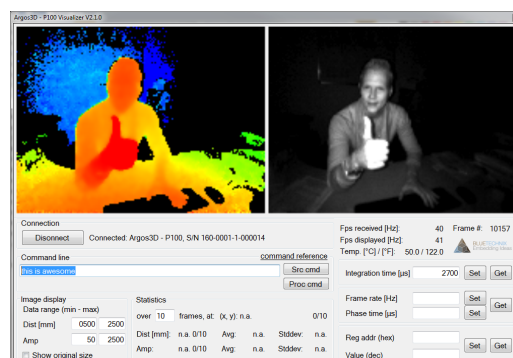


*Smart, Small & low-priced*

## Highlights

- » Resolution of 160 x 120 pixel
- » Field of View of 30 / 60 / 90 / 120 °
- » Standardized connector - TIM
- » 40 x 80 mm / 1.57" x 3.15"

**pmd**  
intelligence



Sample ToF distance and grayscale information

# TIM-UP-19k-S3

## Spartan 6

ToF Depth Sensor Module



BLUETECHNIX  
Embedding Ideas

### Feature Overview

Dimensions	40 x 80 mm / 1.57" x 3,15"
ToF IC	PMD 19k-S3
Pixel	160 x 120
Field of View	30 / 60 / 90 / 120 °
Output	3D Depth Data, Point Cloud
Interfaces	1 x USB 2.0 1 x PVI (8 bit parallel) 3 x GPIO 1 x I <sup>2</sup> C 1 x SPI 1 x UART
Lens Types	M12 or CS
Power Supply	5 V <sub>DC</sub>
Temperature Range	0 to +60 °C

### Applications



- » **Automation and Control**
  - » Range Measurements
  - » Goods Counting



- » **Robotics**
  - » 3D Safety Area
  - » Map Building
  - » Navigation
  - » Obstacle detection



- » **Gesture Recognition**
  - » Touch less Control
  - » Gaming Industry
  - » HMI for Industrial Robots
- » **Building Automation**
  - » Security Appliances
  - » People Counting
  - » Safety Access Control

### Customization

The depth sensor module concept is focused on modularity. Individual base boards with your required interfaces can easily be implemented.

Bluetechnix as one of the leading ToF experts ensures with this unique ToF module a new and very efficient way to build up customized depth sensing systems rapidly.

### Ordering Information

Order No.	Info
150-2201-2	TIM-UP-19k-S3 USB 2.0 PVI ToF Image Sensor Module

Bluetechnix Group GmbH  
Waidhausenstraße 3/19 | 1140 Wien, Austria  
P +43 (1) 914 20 91 x 0 | F +43 (1) 914 20 91 x 99  
[www.bluetechnix.com](http://www.bluetechnix.com) | [office@bluetechnix.com](mailto:office@bluetechnix.com)