

## Duty Cycle Adjustment

## Duty Cycle Adjustment Bypass

## DACs

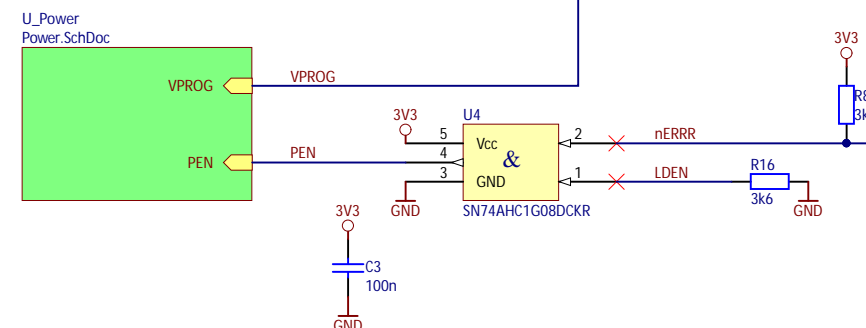
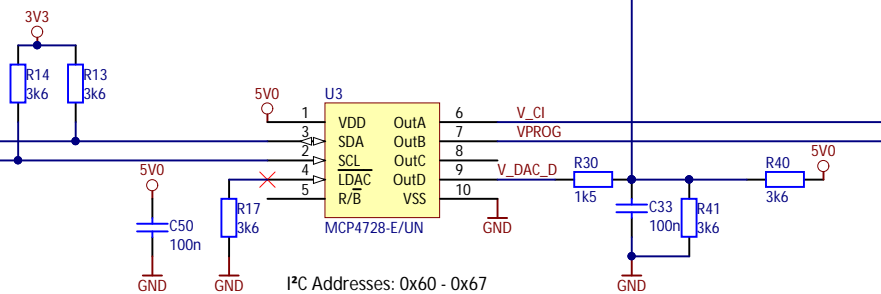
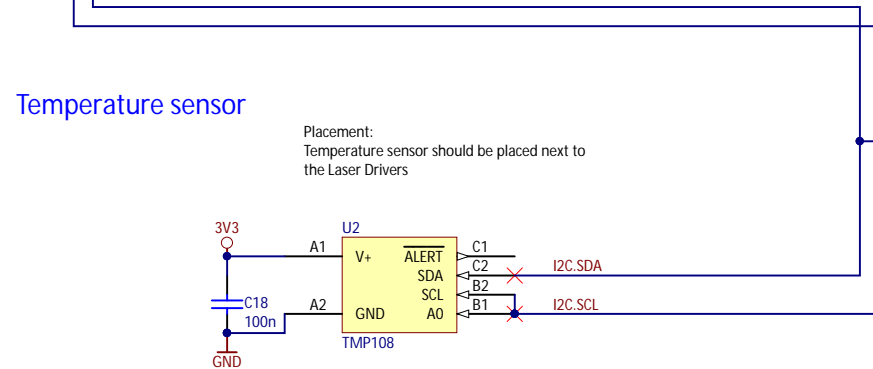
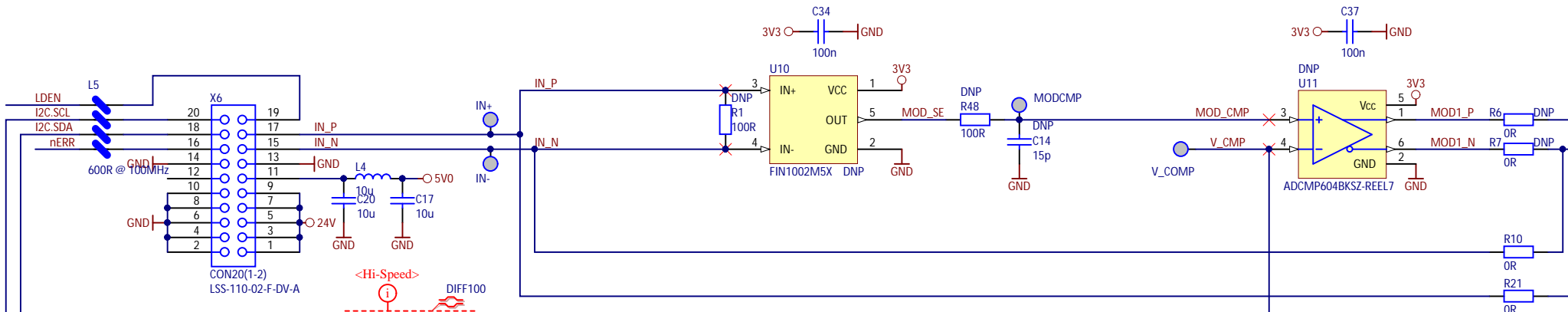
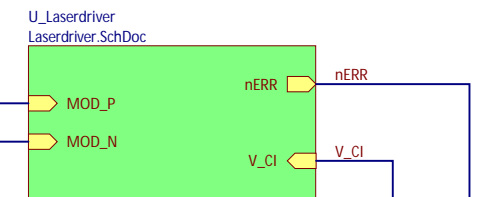
## Power Enable / OC-Protection

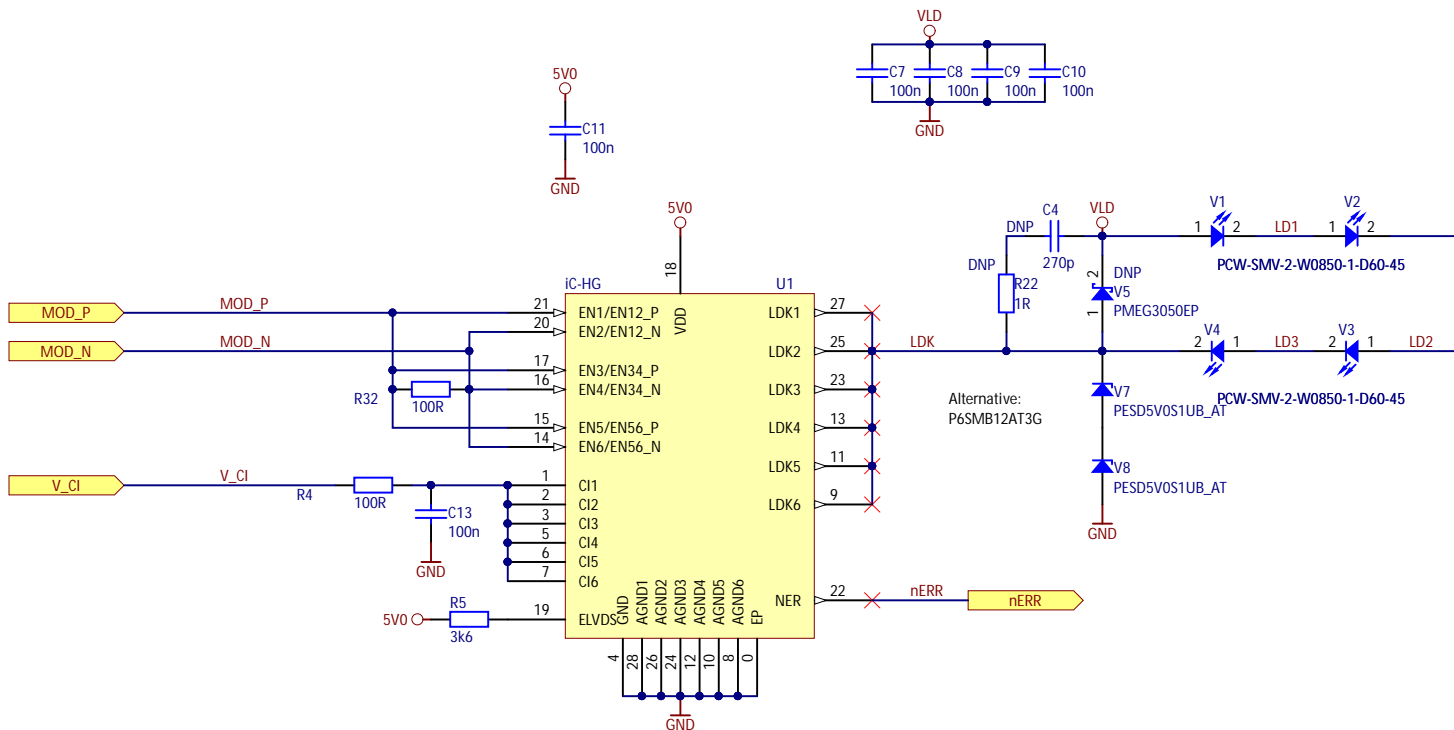
## Temperature sensor

Placement:  
Temperature sensor should be placed next to  
the Laser Drivers

I<sup>2</sup>C Address: 0x4B

PCB  
850-4760  
PCB\_EVK75123-Illumination V1.1





# **EVK75123-Illumination Driver Protection Circuit**

PN2016010  
Rev: V1.1

Bluetech  
Waldhausenstr. 3/19  
A - 1140 Wien  
AUSTRIA

Drawn By: DST  
Checked By: ROB

Sheet 2 of 3  
Size: A4

Last Update: 10.11.2016  
Filename: Laserdriver.SchDoc



Power supply

