

Module Sub-Components

Place-Holder CM-i.MX6 (without spacers)

MP
+U6_1 +U6_2 +U6_3

Spacers must be removed manually from Kit-BOM

EVK75123-Interface

Top Layer

PN2016010
Rev: V1.2

Bluetech
Waldhausenstr. 3/19
A - 1140 Wien
AUSTRIA



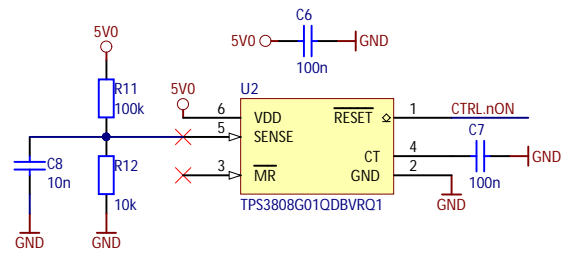
BLUETECHNIX
Embedding Ideas

Drawn By: DST
Checked By: ROB

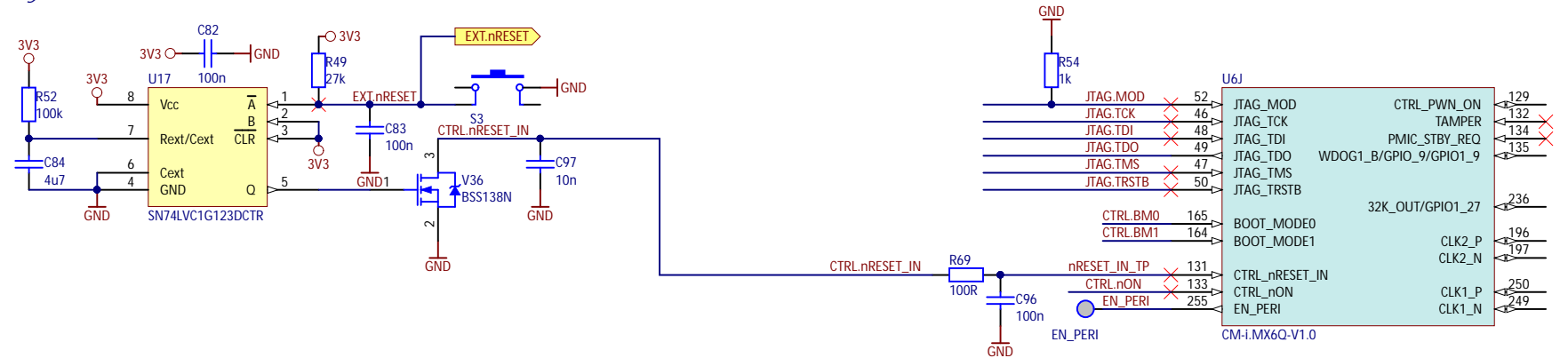
Sheet 1 of 5
Size: A4

Last Update: 12.04.2017
Filename: TopLayer.SchDoc

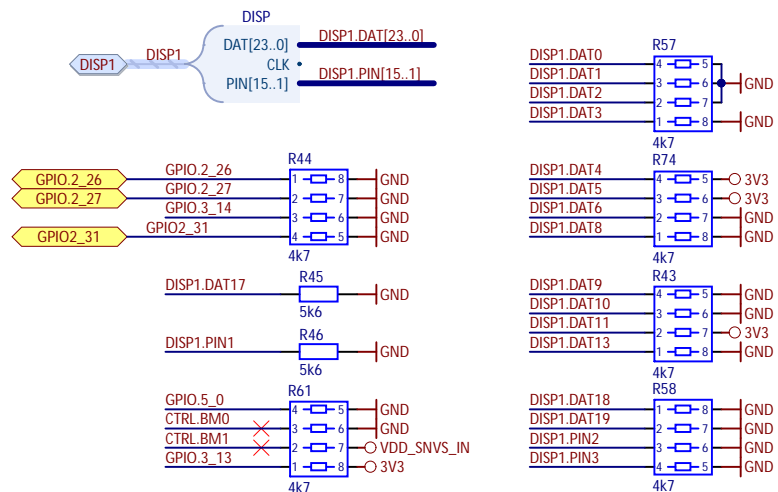
CM-i.MX6x Power On



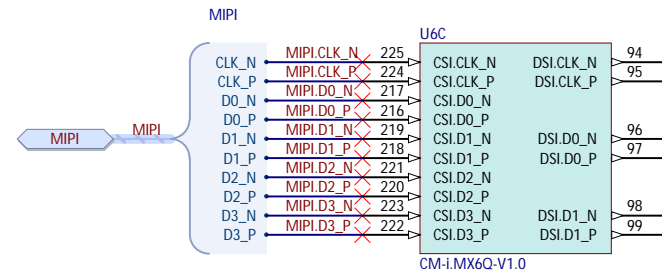
Factory Reset



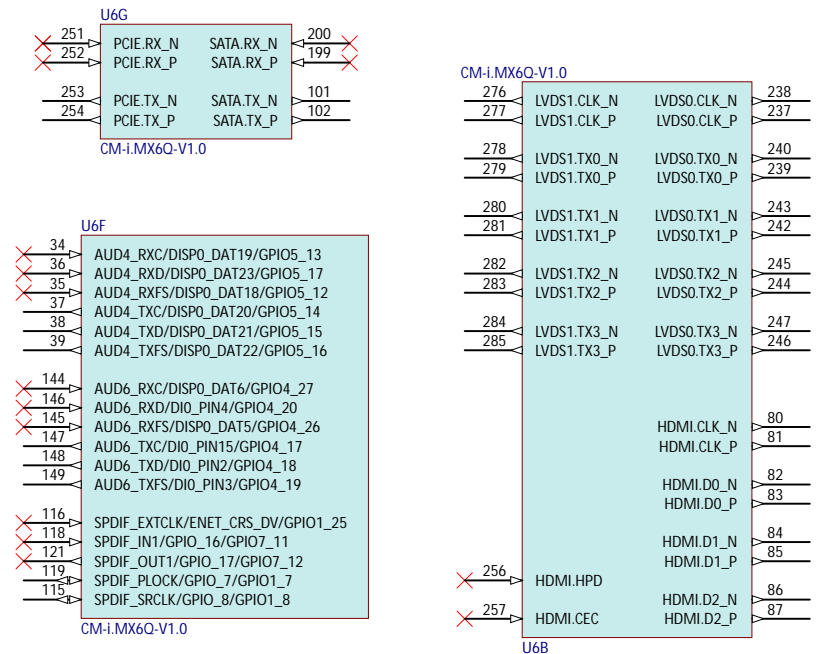
Boot-Mode (ESDHC1)



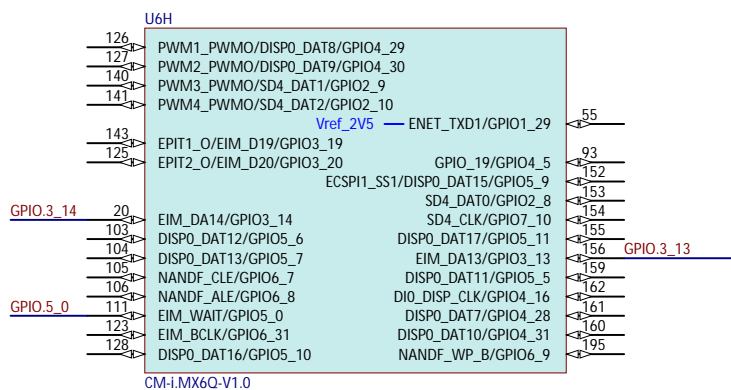
CSI interface



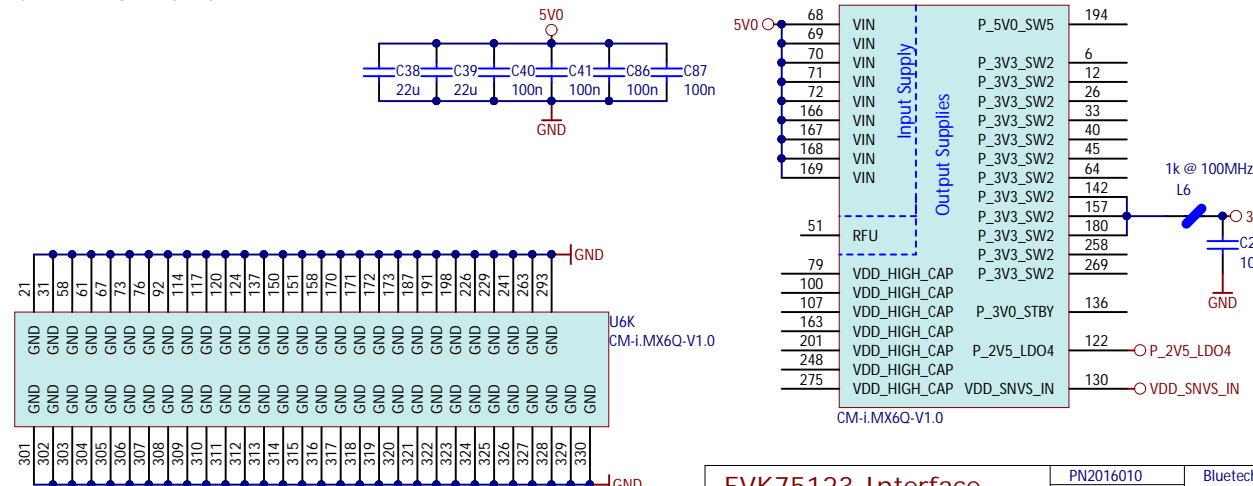
Unused i.MX Parts





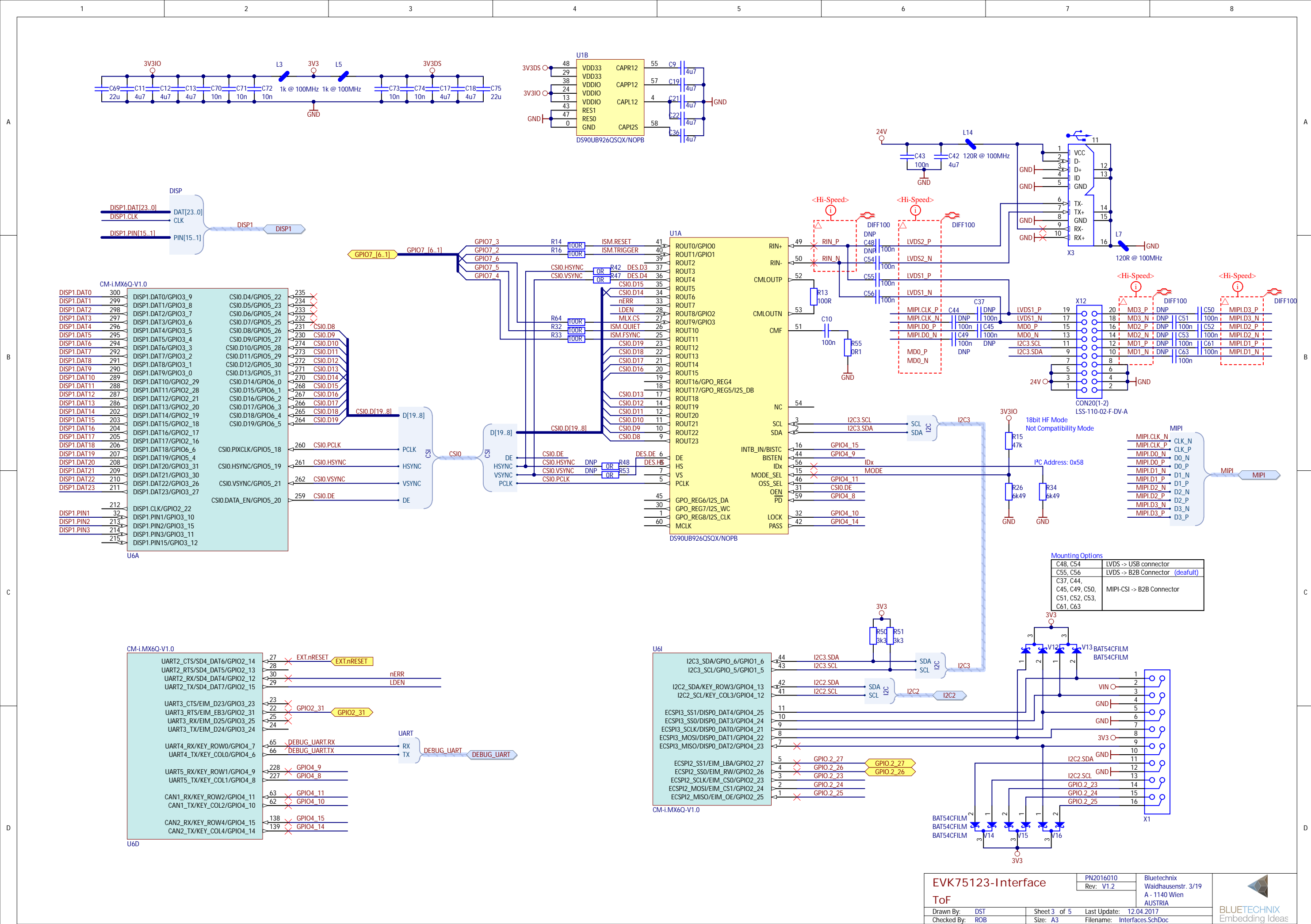
GPIOs



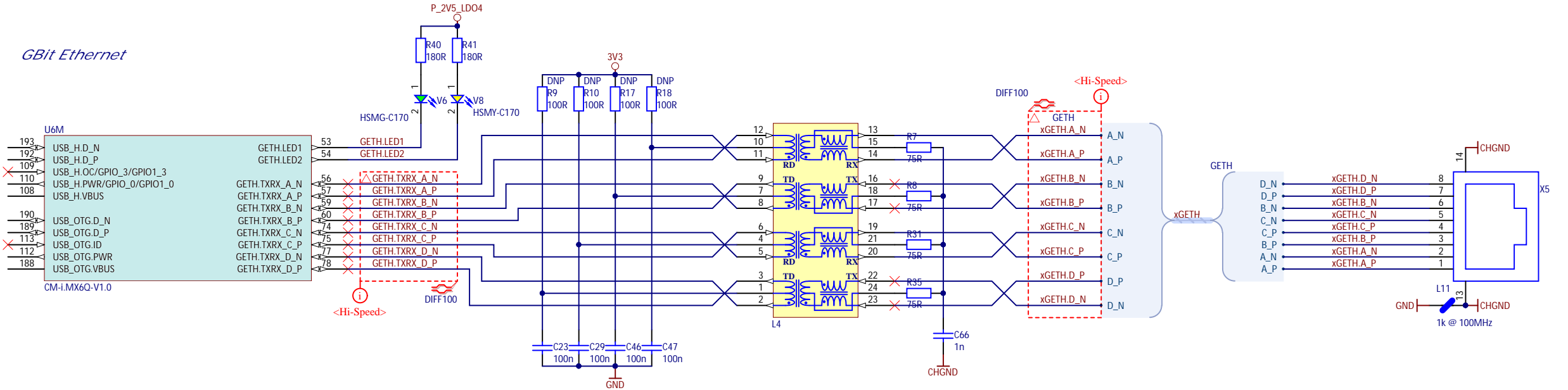
CM-i.MX6x Power



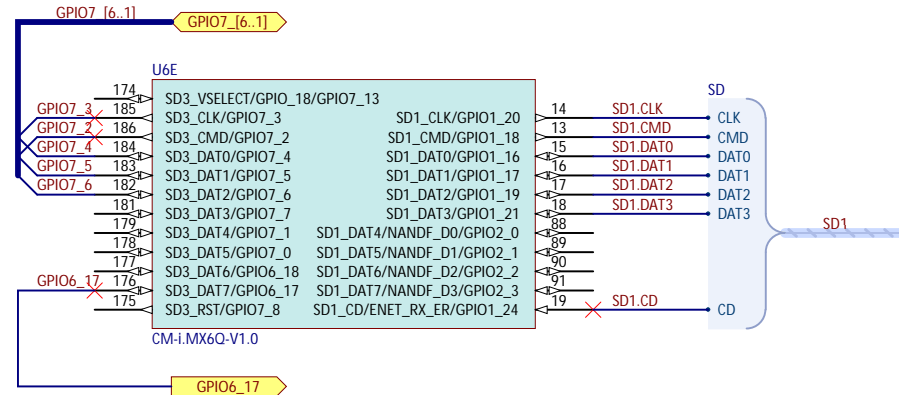
EVK75123-Interface		PN2016010	Bluetechnix Waldhausenstr. 3/19 A - 1140 Wien AUSTRIA	
		Rev: V1.2		
CM-i.MX6x				
Drawn By: DST	Sheet 2 of 5	Last Update: 12.04.2017		
Checked By: ROB	Size: A3	Filename: CM-i.MX6x.SchDoc		
		 BLUETECHNIX Embedding Ideas		



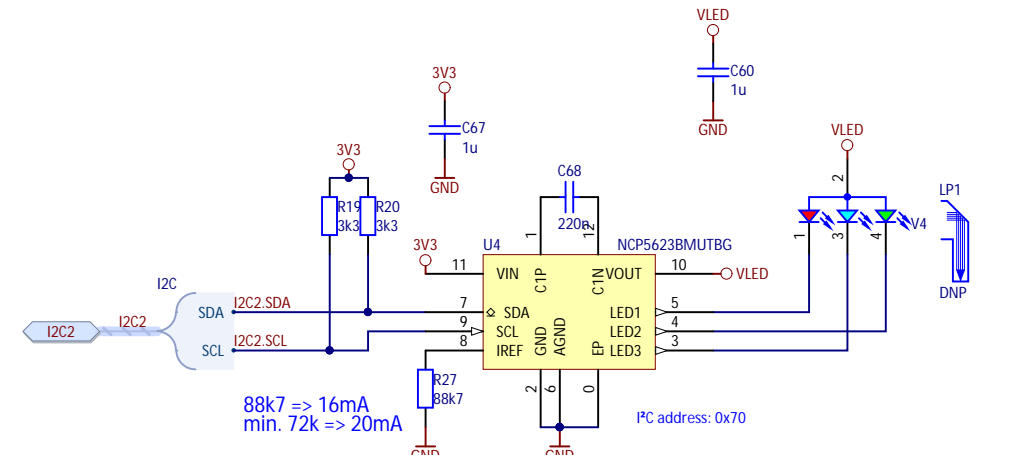
GBit Ethernet



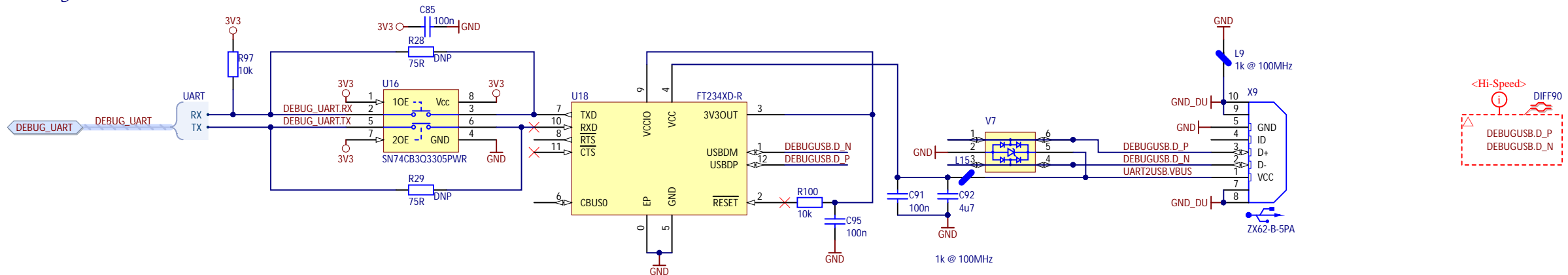
GPIOs



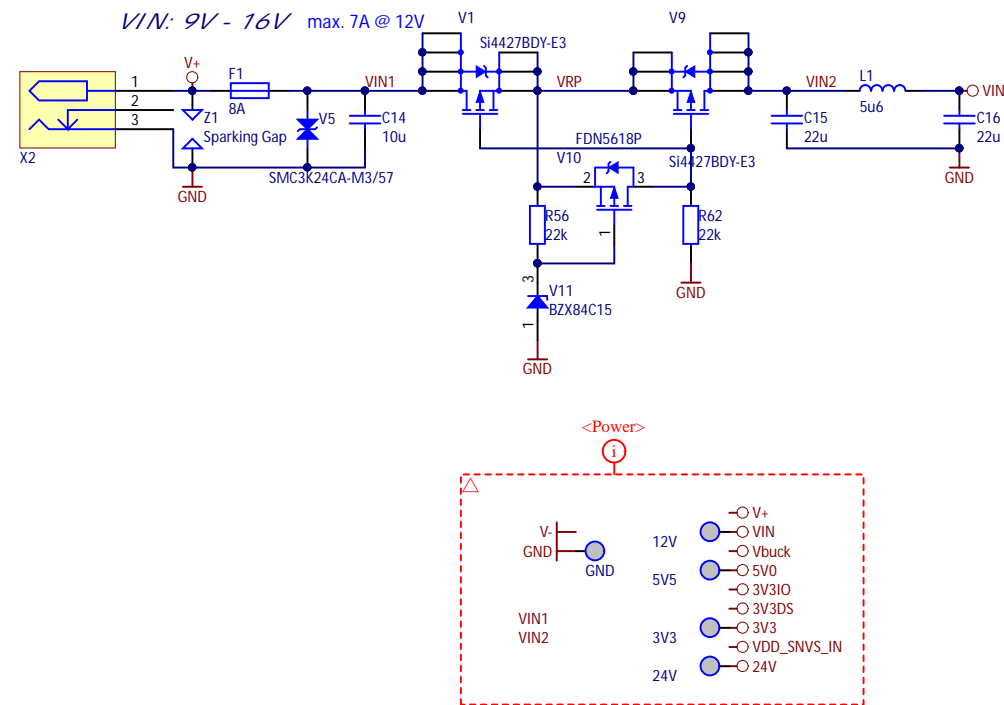
RGB-LED Driver



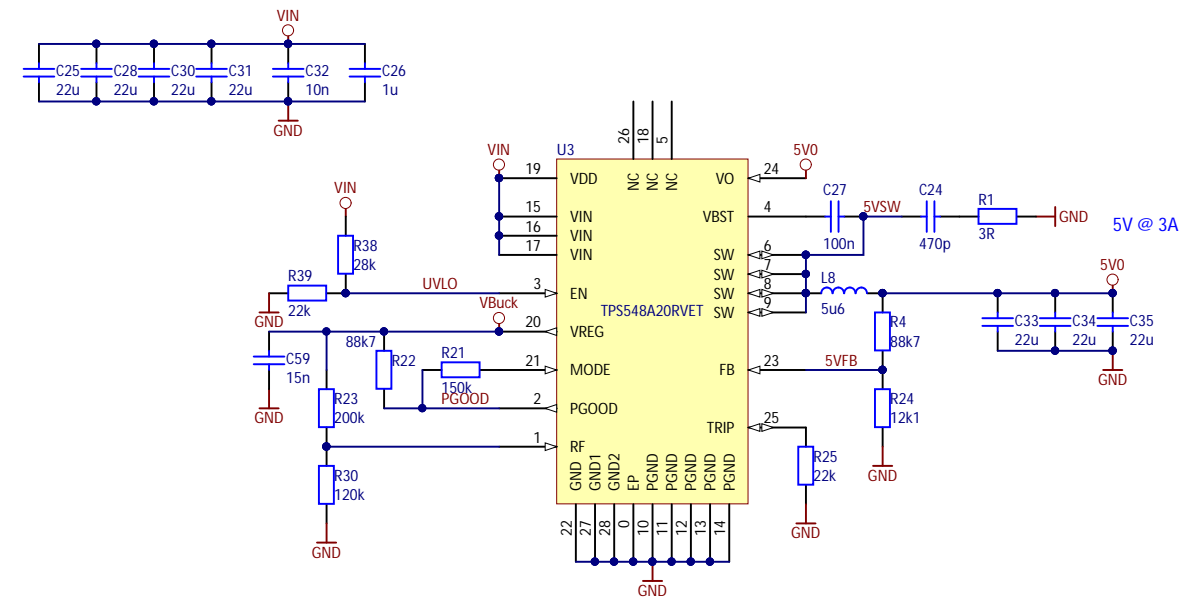
Debug UART



Power Supply and protection circuit



5V Buck



24V Boost

