

1

2

3

4

A

A

B

B

C

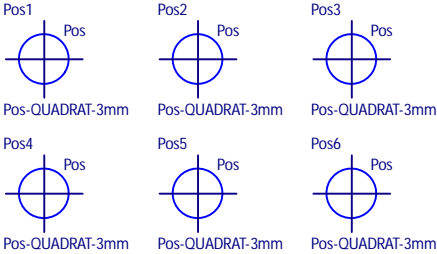
C

D

D



850-5530  
PCB\_EVK75123-MLX75026 V1.0



**EVK75123-MLX75026**

**Top-Layer**

Drawn By: DST  
Checked By: ROB

Sheet 1 of 3  
Size: A4

PN2017002.15  
Rev: V1.0

Last Update: 28.11.2018  
Filename: TopLayer.SchDoc

BECOM Systems GmbH  
Gutheil-Schoder-Gasse 17  
A - 1230 Wien  
AUSTRIA

**BECOM**  
it's possible.

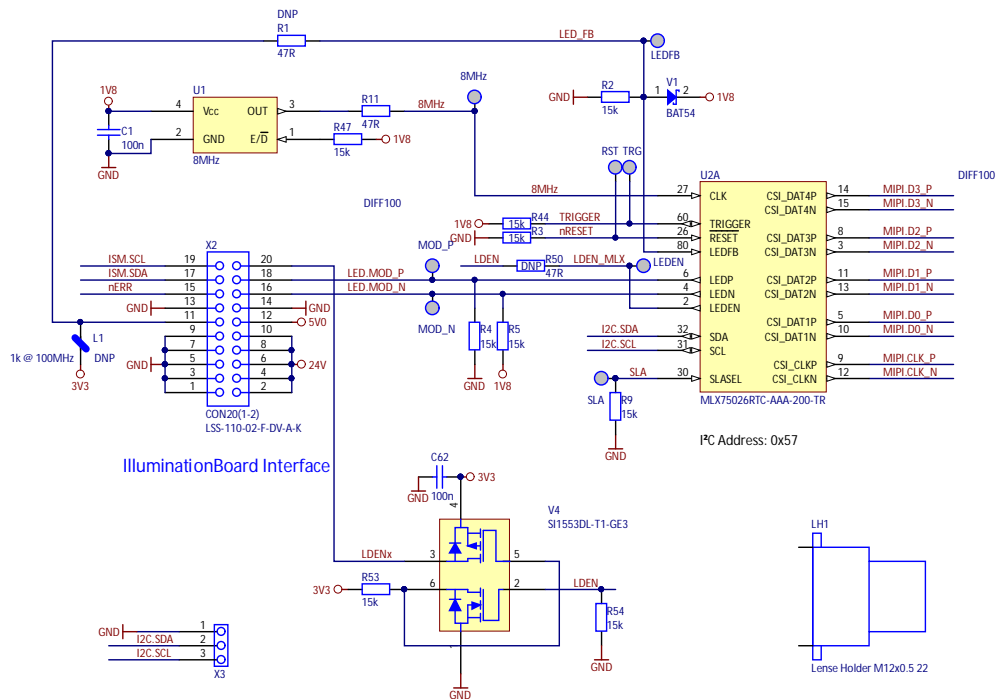
1

2

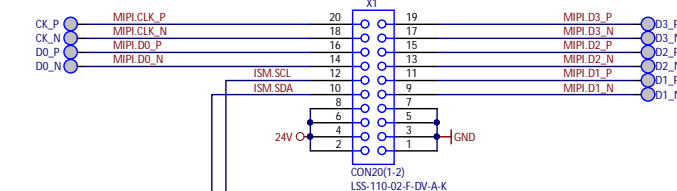
3

4

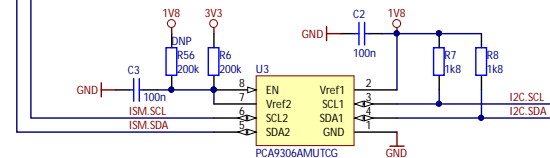
# ToF Sensor



# Interface Board Connector

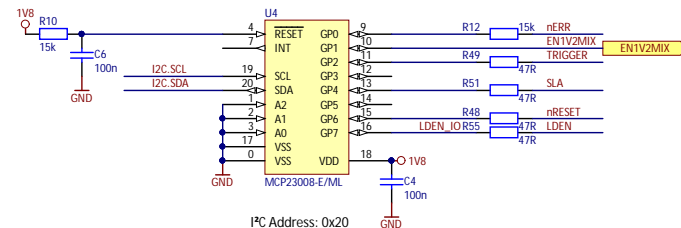


# I2C Level Translator

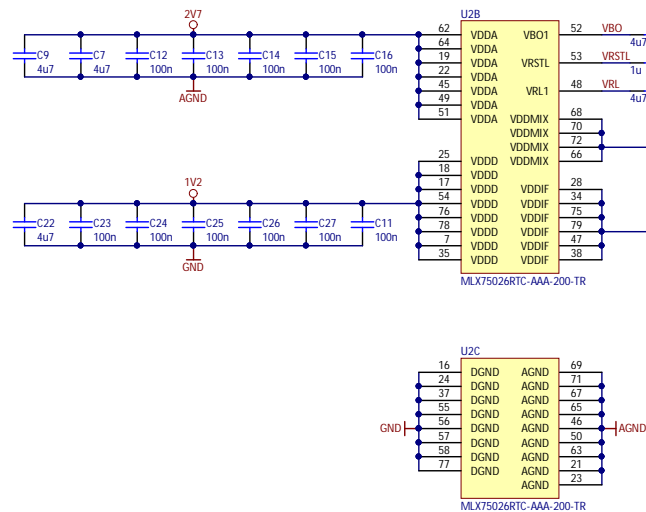
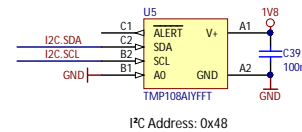


MountOption:  
R56: MIPI-Bridge  
R6: Interface-Board

# GPIO Expander



# Temperature Sensor



EVK75123-MLX75026  
Sensor + Peripherals

Drawn By: DST  
Checked By: ROB

Sheet 2 of 3  
Size: A3

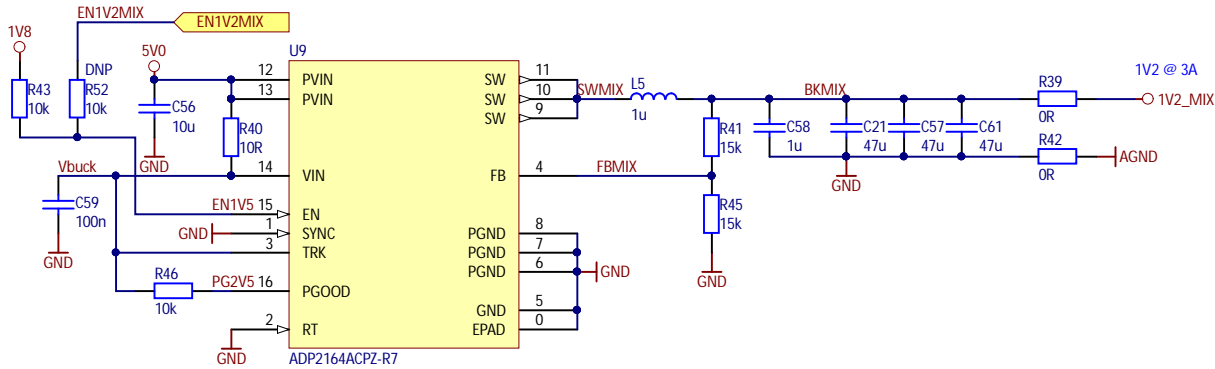
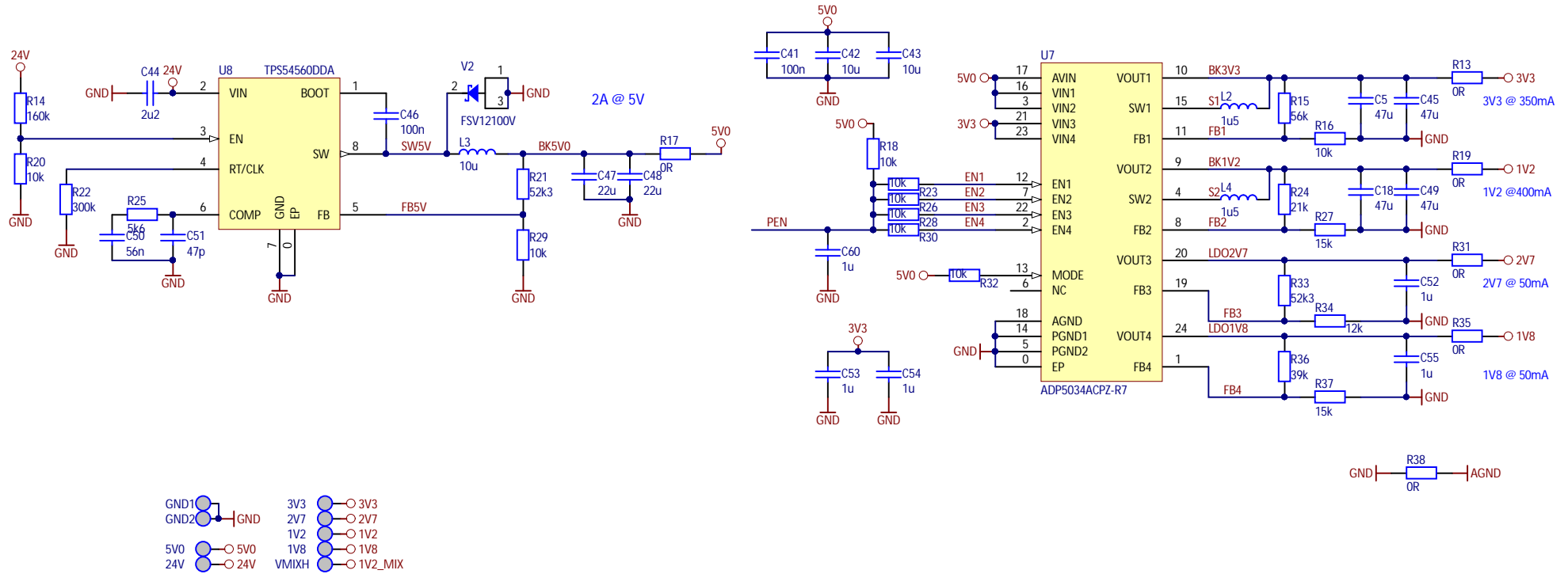
PN2017002.15  
Rev: V1.0

Last Update: 28.11.2018  
Filename: ToF-Sensor.SchDoc

BECOM Systems GmbH  
Gutheil-Schoder-Gasse 17  
A - 1230 Wien  
AUSTRIA

**BECOM**  
It's possible.

## Power Sources



EVK75123-MLX75026

PN2017002.15  
Rev: V1.0

BECOM Systems GmbH  
Gutheil-Schoder-Gasse 17  
A - 1230 Wien  
AUSTRIA

**BECOM**  
it's possible.

Power Supplies

Drawn By: DST  
Checked By: ROB

Sheet 3 of 3  
Size: A4

Last Update: 28.11.2018  
Filename: Power.SchDoc