
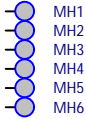
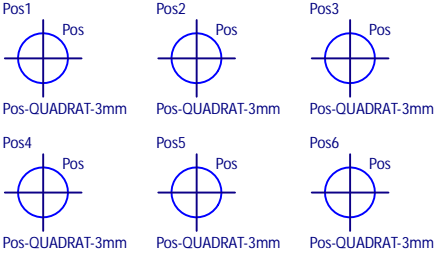




PCB



850-5300
PCB_EVK75123-MLX75027 V1.2



EVK75123-MLX75027

Top-Layer

Drawn By: DST

Checked By: ROB

PN2017002.5

Rev: V1.2

Sheet 1 of 3

Size: A4

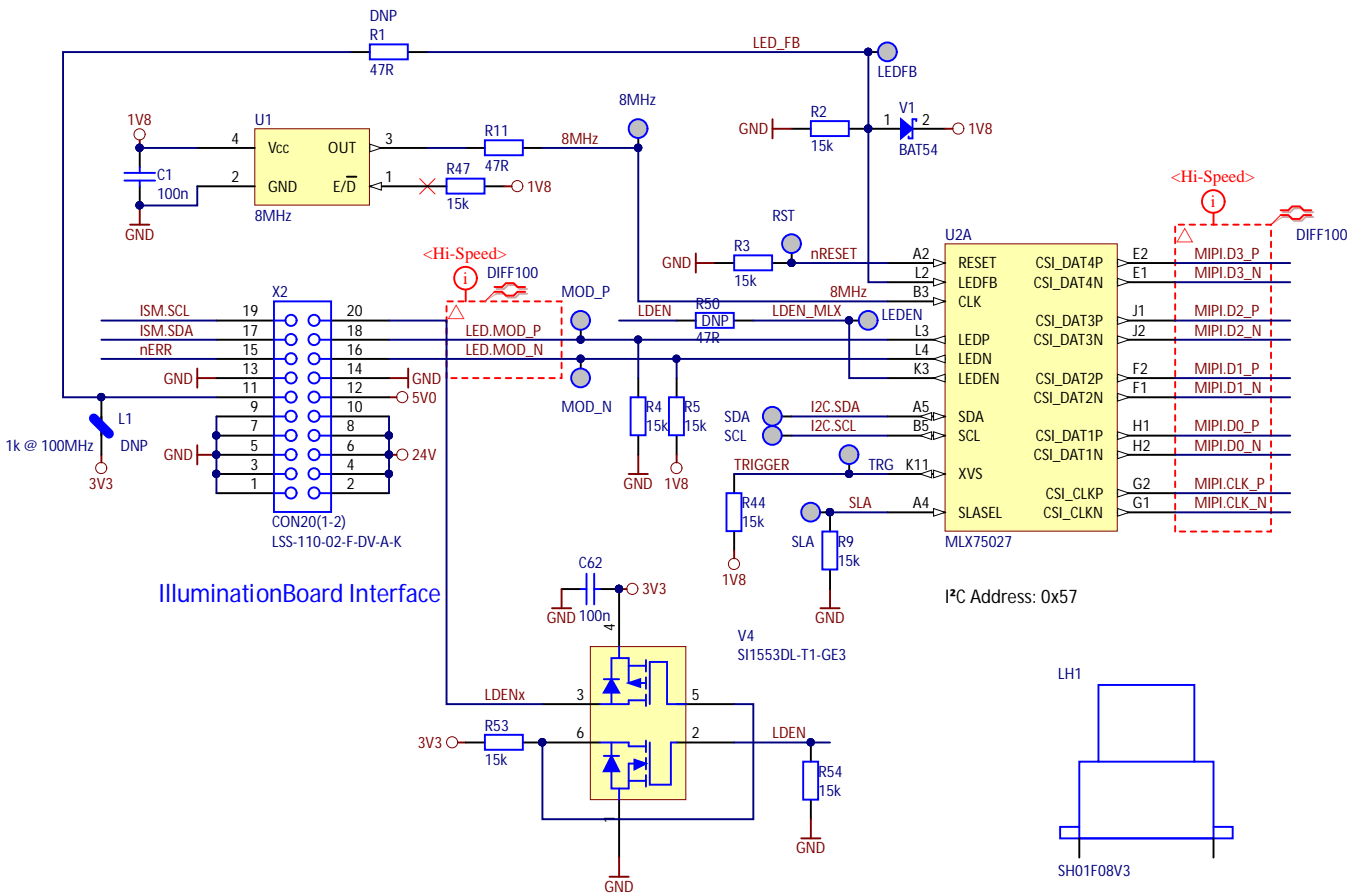
Last Update: 07.05.2018

Filename: TopLayer.SchDoc

BECOM Bluetechnix GmbH
Gutheil-Schoder-Gasse 17
A - 1230 Wien
AUSTRIA

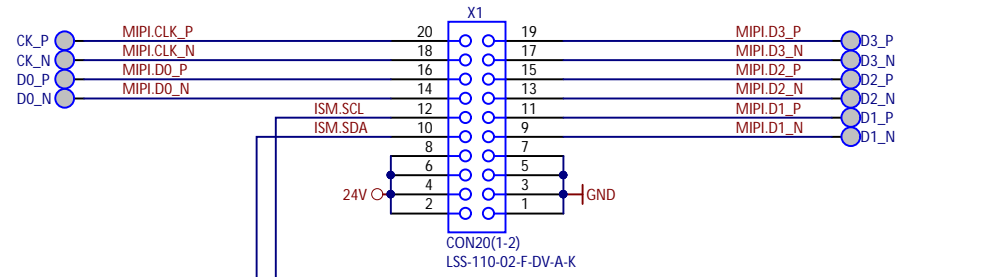


ToF Sensor

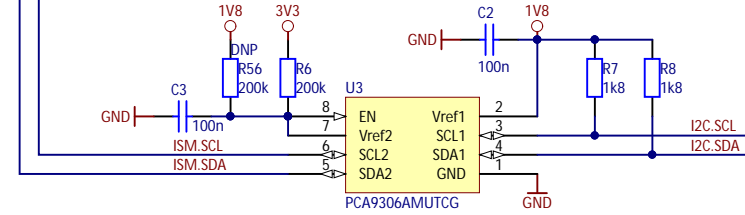


IlluminationBoard Interface

Interface Board Connector

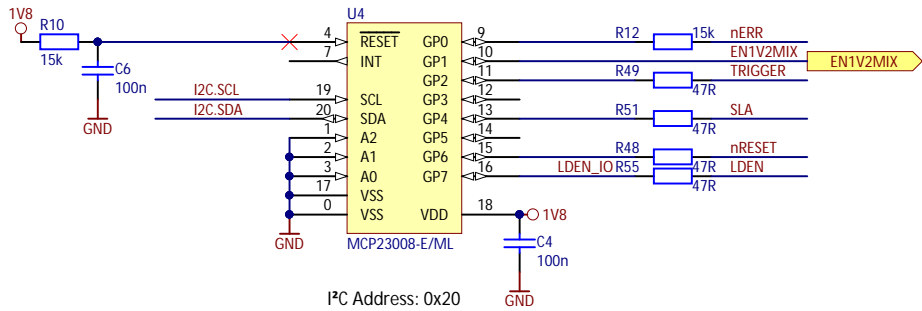


I²C Level Translator



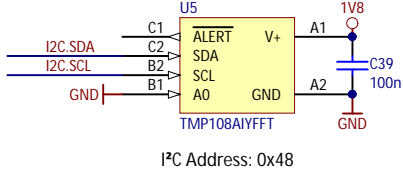
MountOption:
R56: MIPI-Bridge
R6: Interface-Board

GPIO Expander



I²C Address: 0x20

Temperature Sensor



I²C Address: 0x48

Power Sources

